

# EMBEDDED SHIELDED ANTENNA

**Model:** EA2602-BL, EA2603-BL  
EA2606-BL

The Embedded Shielded Antenna is specially developed for production line in metal working environment. The series of antenna adopts shielded design and work correctly in metal surrounding.

**Application:**

Production Automation, AGV Transporter, Logistics, etc.



EA2602-BL



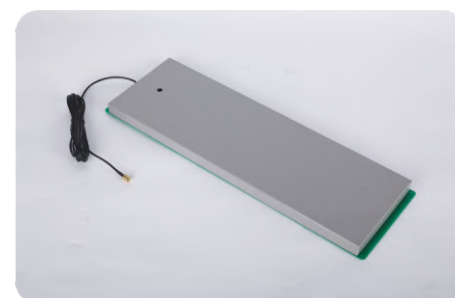
Bottom of EA2602-BL



EA2603-BL



Bottom of EA2603-BL



EA2606-BL



Bottom of EA2606-BL



**Technical Specification**

Model Name	EA2602-BL	EA2603-BL	EA2606-BL
Operating Frequency	13.56Mhz		
Communication Interface	SMA		
Antenna Impedance	50 Ω		
Maximum Power	4W		
Reading Range (Max)	20cm	22cm	32cm
Dimension (L*W*H)	175*89*26.5mm	370*80*21.5mm	450*140*21.5mm
Feeder Length	2.5m		
Housing Material	PCB and sheet metal		
Weight	310g	530g	1410g

