

Interactive/Capactive touch foil (17"-120")

Interactive Touch Foil products description :



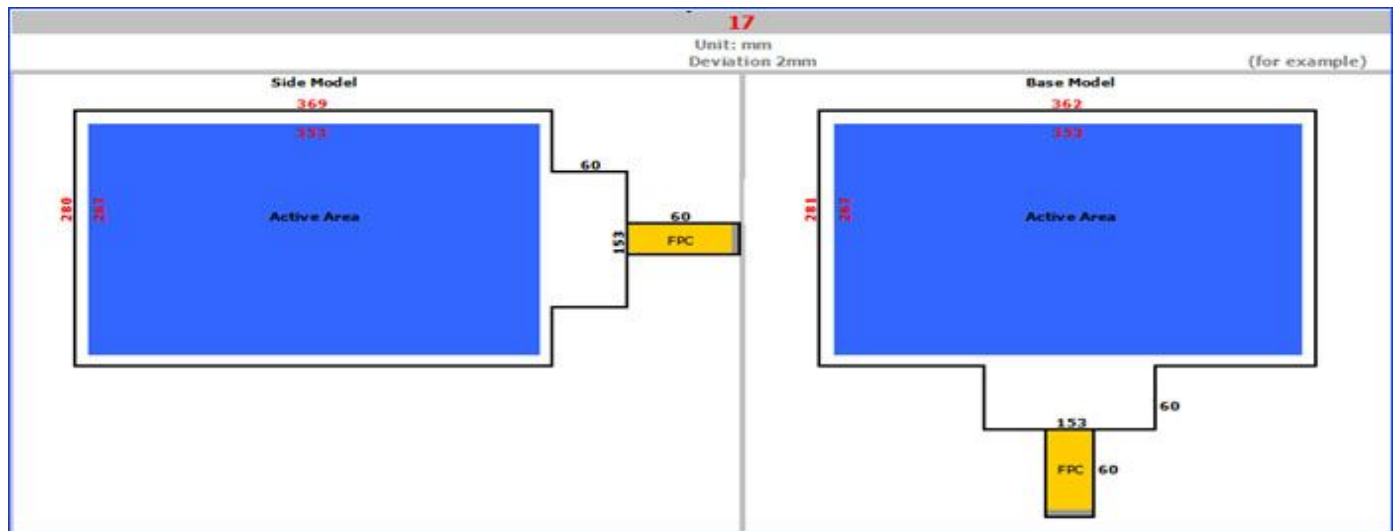
Interactive touch foil is transparent touch-sensitive film, affixed to the membrane in the back of the glass or transparent acrylic plate, glass or acrylic panels can instantly transform size touch screen. Only a few microns thick our thin film display screens can turn any surface into a high definition multi media display surface. Rear projected images, video and dynamic media content can be displayed in any format, anywhere.

our touch foil can be pasted on a glass window or inside of a glass door and a simple back-projection or front-projection projector can turn the glass window or glass door into a large touch screen. This film enables projection of product information directly on the glass to attract interactivity with the potential customers. It is a perfect promotional display that not only provides interactive promotion and customer experience around the clock but also records the interactive data from potential customer

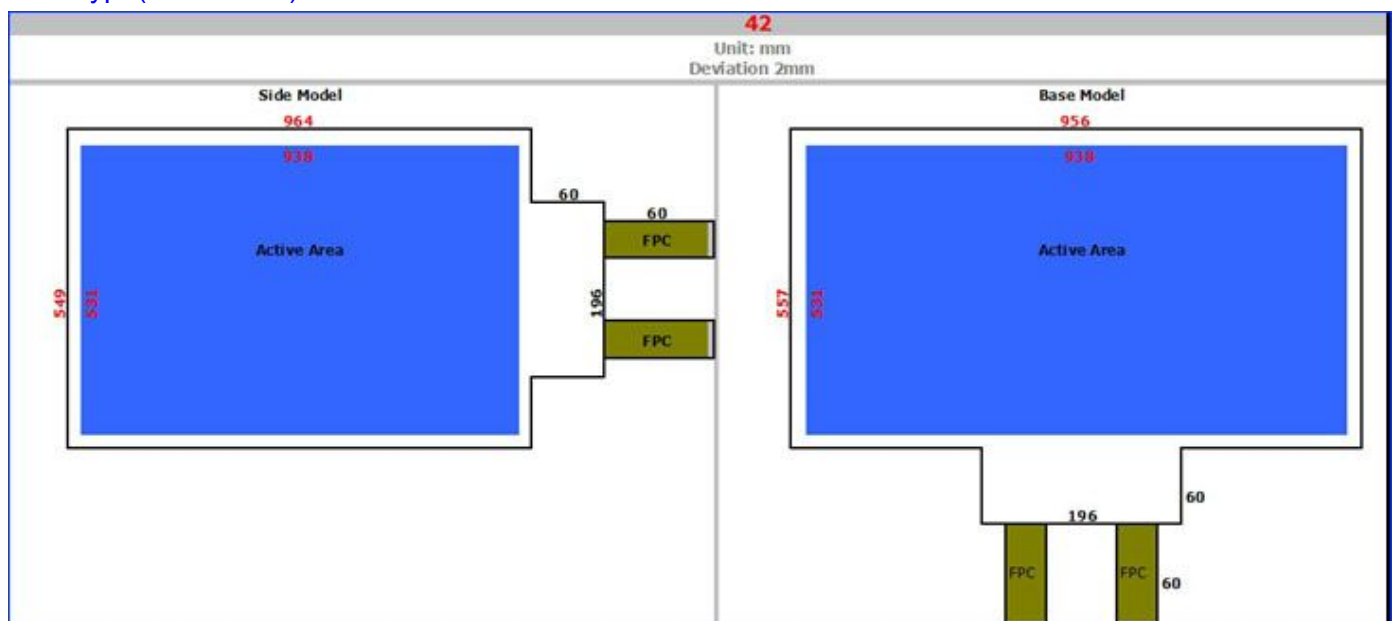
Interactive touch foil type :

Touch foil type for paste	Tail version	Touch controller	Foil ratio	Touch points
Water-adhesive (removable)	Base or bottom	USB interface	16:9 (17"-120")	2,,10,20,40 points
Adhesive (permanent)	Side or short	USB interface	4:3 (40"-120")	

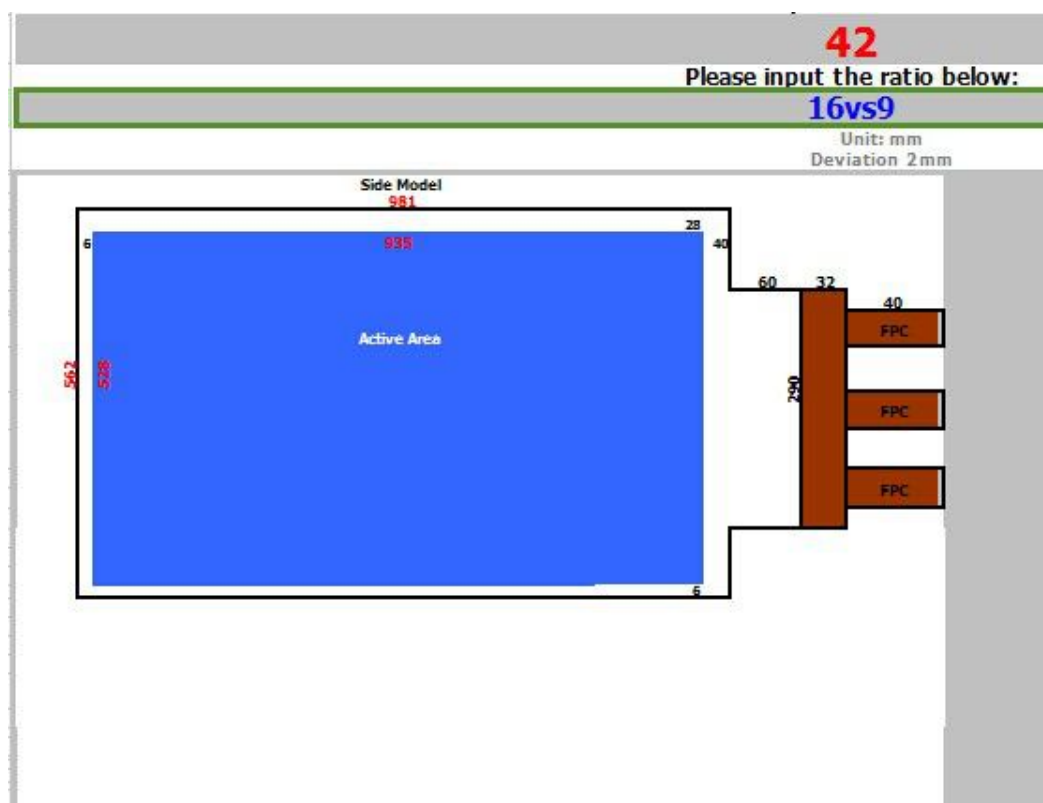
Standard Type(Dual points):



4096 type(Multi touch):



8192 type(high accuracy,Multi touch)

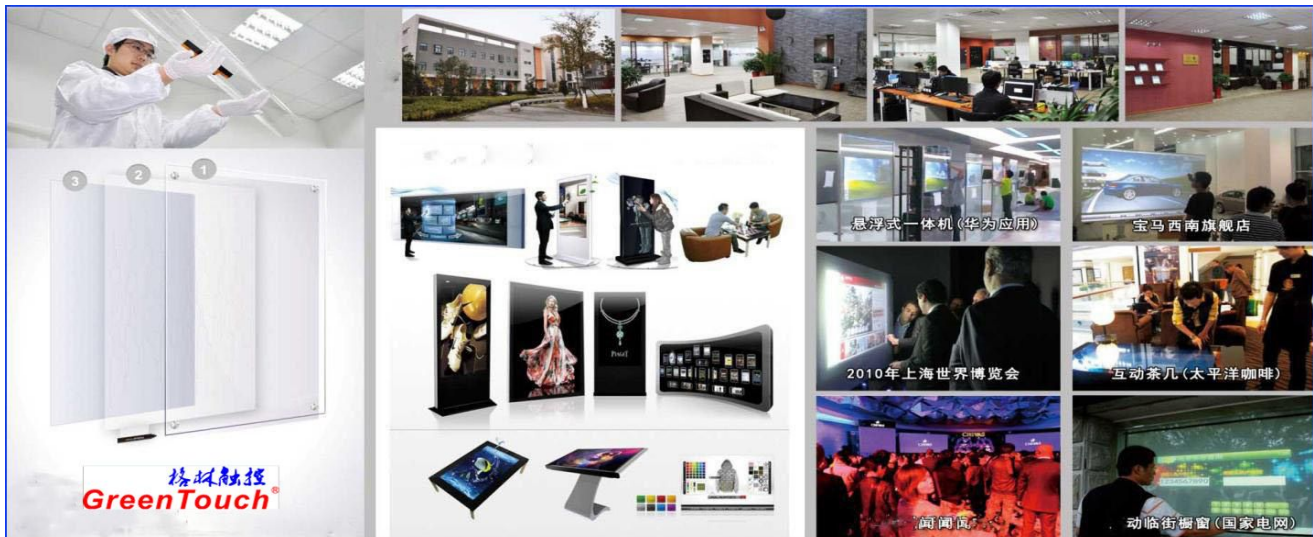


Interactive touch foil advantage:

1. Super-thin, and transparent appearance
2. High definition, Stable touch
3. Well-positioned, and support multi-touch points
4. Through the glass or other objects to touch just like gesture
5. The size can be customized
6. high transmittance
7. simple set-up
8. Advanced dual and multi touch

Interactive touch foil application:

Suitable for Store window displays,
Indoor / outdoor kiosks, Exhibitions,
Visitor attractions,
Museums Touch tables,
Training, meeting rooms, etc.



Interactive touch foil more specification:

Induction method	The improved projected sensing technology, criss-cross X, Y nanowires constitute sensing matrix
Touch size	17"~120" can be customized
Touch accuracy	No drift, the deviation is about 1~3mm
Calibration way	software calibration
Induction thickness (penetration)	Adjusted by software to adapt to various thickness of glass, even wear gloves to produce touch-sensitive, can penetrate non-metallic materials about the thickness of 20 mm (middle to allow air layer), the induction can even penetrate glass thickness about of 25mm
Scanning frequency	60Hz~130HZ
Output way	USB 2.0 (HID public interface to USB Mini B interface)
Compatibility system	WIN7 /WIN8/WIN8.1/WIN10 /Linux (Ubuntu 12.04.4,kernel version:3.11.0-15-generic) Ubuntu 14.04.2,kernel version 3.16.0-30-generic) Android4.2 or above (kernel version>A20->3.3.0,RK3188->3.0.36) Android4.4 or above(kernel version RK3288-> Linux3.10.0)
Temperature range	-20°C~60°C
Humidity range	0% RH to 95% RH (without condensation neighborhood)
Transmittance	>93%
Power consumption	Max 0.5W
Product Certification	CE,FCC,ROHS
EMC	EN61000-6-1: 2007 EN61000-6-3: 2007+A1: 2011
The thickness glass	Around 8mm

Interactive touch foil pictures show:

Spare part for operation system:

Android board (controller)

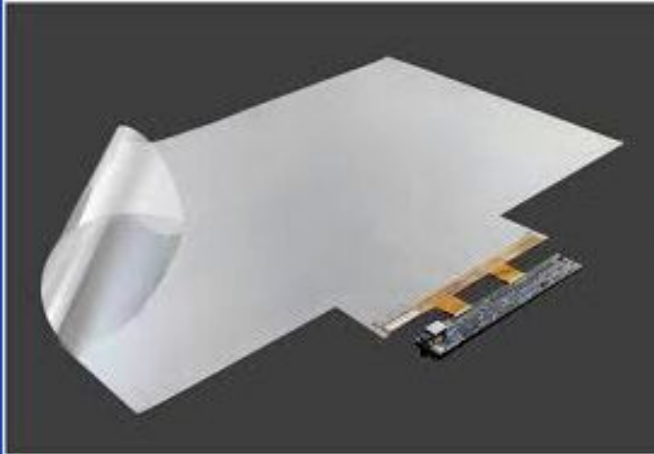


USB connected controller

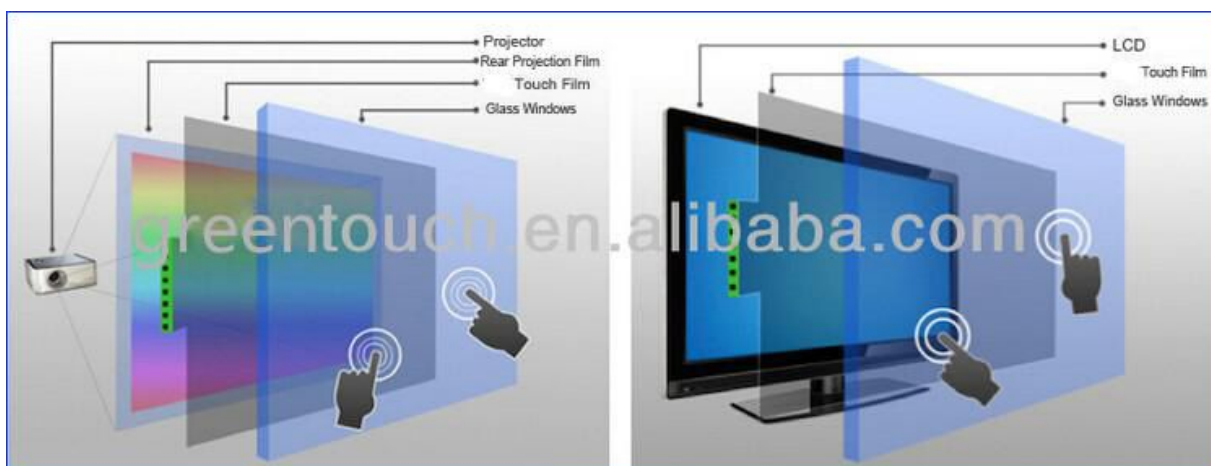
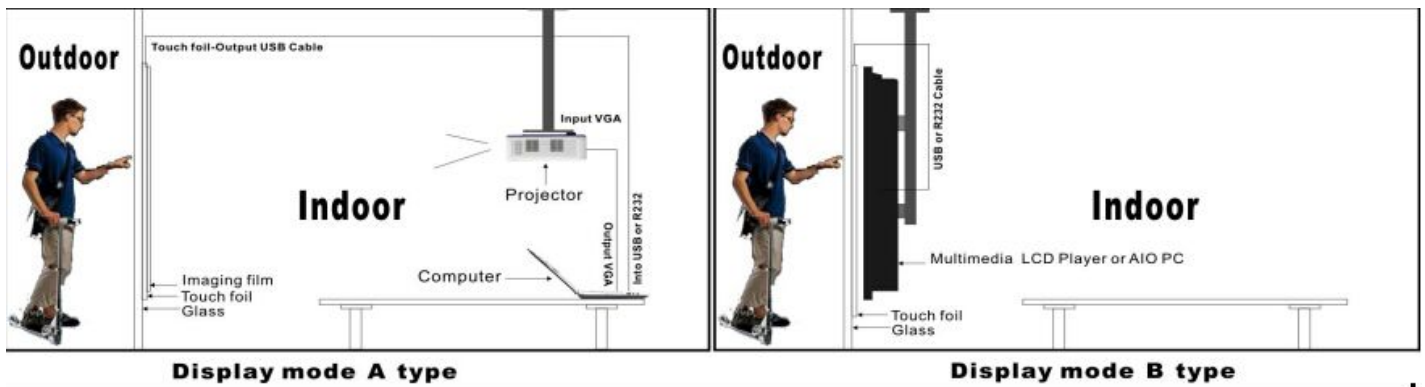
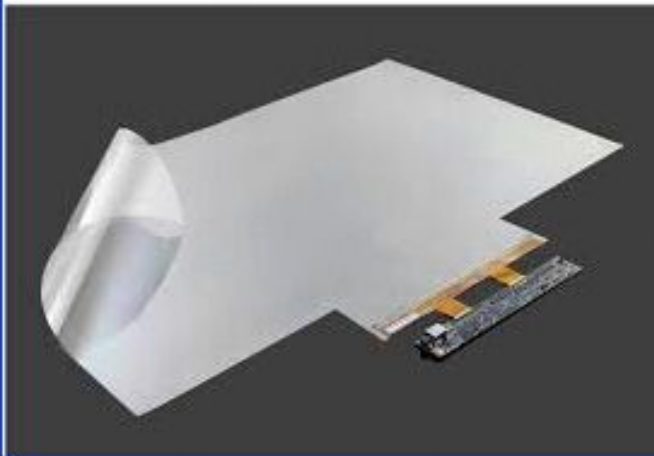


Package:

1-2 pieces



10 pieces size ≤ 55 inch



Interactive touch foil certificate:



Delivery and Payment way :



Factory shown:



We are support custom-made ,no minimum order, hope we can cooperation in the near future, thanks.