

PT-33 SERIES

20KVA-80KVA

Power Quality Management
Professional service



High efficiency, High density ratio of energy and power leader

PT33 Series High frequency online UPS 3phase/3phase

PT33 series, 3 phases in/3 phases out UPS is true double-conversion design, with input power factor correction (PFC), so power factor is up to 0.99. Its high-power capacity can greatly reduce its volume and floor space. With digital control, the system has high stability and the ability of self-protection and fault diagnosis. This series of UPS can better solve power supply problems such as voltage decaying, oscillation, high voltage impulse, voltage fluctuations, surges, harmonic distortion, disturbances, frequency fluctuation etc.



Typical Application Environment:

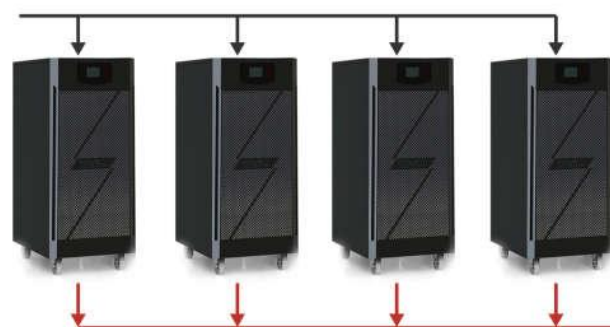
- Medium and small data centers
- Computer data room
- Communication base station
- Automation Control System
- Security system
- Broadcast television system
- Factory production process control
- Petrochemical



PRODUCT FEATURE:

Parallel redundancy:

N+1 redundant parallel technology, 4pcs paralleled connection of UPS are available, greatly improving the reliability for power system; With parallel interface and they share the same battery pack, reducing floor space and operating costs.



Output load capacity:

Strong load capacity can adapt to the unbalance 3 phase loads.

Intelligent interface:

With RS232, RS485 communication interface, parallel interface and SNMP card (optional)

Intelligent Display:

Using LCD and LED dual display, users can intuitively understand the working state and parameters of UPS

Double conversion high frequency online design

With input power factor calibration (PFC), input power factor up to 0.99, the effective rate of whole machine is up to 94.5%, the system is more energy-saving and environmentally friendly; With ECO working mode and the efficiency can reach to 98% or more.



Maintenance bypass switch

Standard maintenance bypass switch for continuous maintenance.



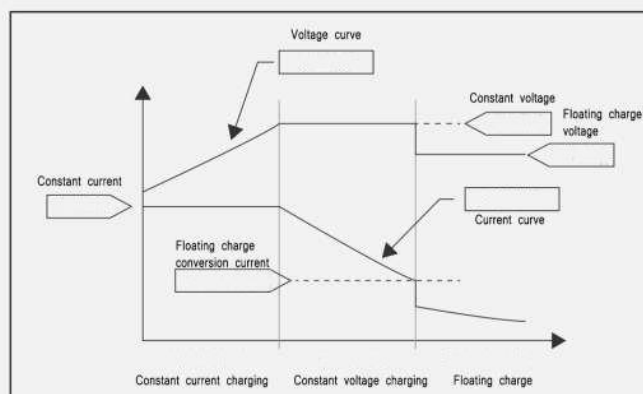
UPS + battery overall solution:

PT33 series UPS supports the use of a common VRLA lead-acid battery, which is perfectly matched with our battery. PT33 series mounted with our batteries, combined with our intelligent battery management technology, they are designed and validated to ensure better compatibility, quality and battery life. Provide with more quality and uninterrupted power protection to users.

Meantime time, PT33 series supports continuous adjustment of the number of battery sections. It can be used for more flexible configuration according to different load and backup time, saving user's initial investment cost of the household. During the operation, if there is a local battery failure, you can directly exit the failed battery and reset the number of battery sections online to achieve rapid maintenance. The user's power is protected from being affected.

Optional quantity of external battery and intelligent charging management:

The number of battery sections can be set according to user requirements: 32/34/36/38/40 pcs, the parallel groups of power storage is reduced; the user can set the charging current, constant current, constant voltage and floating charge, three-stage charge management automatically switches, which improves battery life.

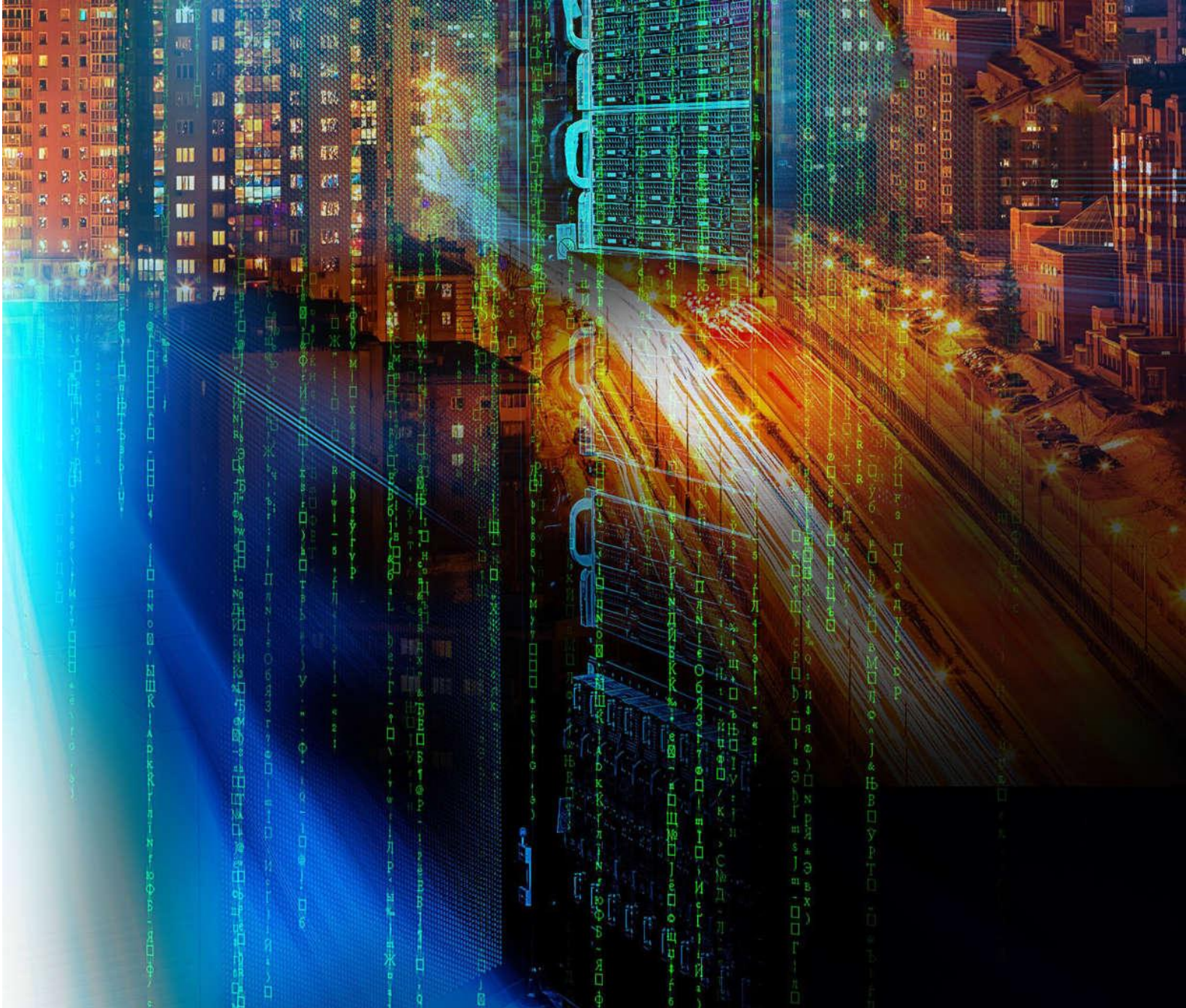


Emergency shutdown function:

With emergency power off function (EPO), press the EPO button for emergency shutdown, can avoid more serious safety problems such as earthquakes, fires, etc.

SPECIFICATION:

MODEL	PT33-20KS	PT33-30KS	PT33-40KS	PT33-60KS	PT33-80KS
Rated power	20KVA/16KW	30KVA/24KW	40KVA/32KW	60KVA/48KW	80KVA/64KW
INPUT					
Input Mode	Three phases + N + G				
Rated Voltage	380/400/415Vac				
Voltage Range	208~478Vac				
Frequency	45-55Hz at 50Hz/54-66Hz at 60Hz (Adaptive)				
Range Power Factor	≥ 0.99				
Harmonic Current Distortion (THDi)	≤ 3%(100% nonlinear load)				
Bypass Frequency Range	Upper limit of bypass protection voltage: 220V: + 25% (+ 10%、 + 15%、 + 20% optional); 230V: + 20% (+ 10%、 + 15% optional); 240V: + 15% (+ 10% optional)				
	Minimum bypass protection voltage: -45%(-20%、-30% optional)				
	Bypass frequency protection range: ±10%				
OUTPUT					
Input Mode	Three phases + G or Single phase + N				
Rated Voltage	380/400/415Vac or 220/230/240Vac				
Range Power Factor	0.8				
Regulation Accuracy	±1%				
Output Frequency	AC mode	±1%、±2%、±4%、±5%、±10% settable (50/60±0.2)Hz			
	Battery mode	(50/60±0.2%) Hz			
Load Peak Ratio	3:1				
Output Voltage Distortion	≤2% with linear load				
	≤ 5% nonlinear load				
BATTERY					
Battery Voltage	DC±192V/±204/±216V/±228/±240V (±16/17/18/19/20 pcs) optional				
Charge Current	10Amax				
OTHERS					
Transfer time	AC mode to bypass mode: 0ms(following); AC mode to battery mode: 0ms				
Efficiency	Normal mode≥ 94.5%				
Communication Interface	USB,RS485, dry contact , parallel connection (optional) , SNMP card (optional) , relay card (optional)				
Standard	YD/T1095-2008				
PROTECTION					
Overload	Normal mode: load ≤ 110%,60min; ≤ 125%, 10 mins; ≤ 150%, 1min; ≥ 150% shutdown immediately				
Over heat Protection	Normal mode: switch to bypass mode; Battery mode: turn off the output immediately				
Emergency Power Off(EPO)	Shutdown the output immediately				
ENVIRONMENT					
Operating Temperature	0℃ ~ 40℃				
Storage Temperature	-25℃ ~ 55℃				
Relative Humidity	0 ~ 95% no condensation				
Altitude	< 1500m, In case of exceeding 1500m, it shall be reduced according to GB/T 3859.2				
PHYSICAL					
Dimension W * D * H(mm)	724X250X534			724X301X961	
Net Weight(kg)	45	46	48	80.5	82.5



G-Tech Power CO., LTD.

**Office Address: D-201, Huahan Building, Langshan Road 16,
Nanshan District, Shenzhen, 518057, China.**